



# UV600

OPERATING  
&  
FILTER REPLACEMENT  
DIRECTIONS

# TO BEGIN USING YOUR **AIRPURA**

**Inspect the exterior of your Airpura** to verify there is no damage from shipping. If any damage is noted, please follow the instructions from the distributor returns policy.

**Wipe the unit** with a damp cloth to remove any dust from packaging

**Plug the unit** into a regular grounded 110 volt outlet

**Turn on the unit** to MAX and allow it to run for a few minutes

**Set the variable speed** control to the level you wish

The most efficient way to use your Airpura for regular air quality maintenance is to run it at a low speed **24 hours a day 7 days a week.**

**Maintain a humidity level of below 40% at all times in your home.**



## **FILTER MAINTENANCE AND REPLACEMENT**

Ensure regular maintenance/replacement of filters

### **The Prefilter**

Can be vacuumed from the exterior of the unit once a month or more often. Should be replaced at least after 12 months of use

### **To vacuum the Prefilter**

Use the brush attachment on your vacuum cleaner  
Vacuum slowly around the mesh surface of the filter chamber

## **IMPORTANT SAFETY NOTE**

Please ensure air purifier is turned OFF when plugging into a power source. Failure to do so may result in motor potentially stalling and/or burning.

## **Replacing the UV bulb**

**Open** the filter chamber following the instructions

**Pull** the bulb upward out of the connector

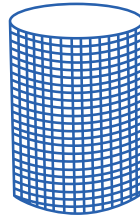
**Push** the replacement bulb firmly into the connector

**Close** the filter chamber following instructions





**Poly Prefilter 600 2-pack**  
3-6 months

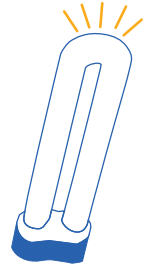


**HEPA 600RVHU Filter**  
(99.97% efficient @ 0.3 Microns)  
3 to 5 years



**18 lbs Coconut Shell Carbon Filter (100% blend)**  
24 months

**UV614: HEPA 14 Filter**  
(99.99% efficient @ 0.3 Microns)



**UV bulb**  
18-20 months

## Technical specifications

**Tobacco smoke odor, and chemical control**

18 lbs activated Carbon  
13"H x 13.25"OD x 7.5"ID

**Carbon bed**  
2" deep

**Particle removal**  
40 sq ft true HEPA  
(Measured 1 side only)  
12 pleats per inch  
Pleats warm rolled with separators

**Air Flow 560 cfm**  
More cfm than any other home unit available

**Housing**  
Powder coat steel

**Size**  
23 in x 15 in

**Weight**  
45 lbs total

**Watts**  
120 on high / 40 on low

**Sound Level**  
28.1 db on low (at 6 feet)  
62.3 db on high (560 cfm)  
(Room level 25.1 db)

**ETL Certified**  
Conforms to CSA C22.2  
no 113 ANSI / UL 507



## Air purifiers models and filter configurations

	Prefilter	Particulate	Carbon
<b>Alternates</b>	Cotton Prefilter TarBarrier Prefilter		
<b>Upgrade</b>		HEPA 14 Filter (99.99% efficient @ 0.3 Microns) HEPA 14 Filter (99.99% efficient @ 0.3 Microns) + TiO2	26 lbs Impregnated Carbon Filter (35/65% Blend : KI/ Potassium Iodide, Coconut Shell Carbon)

## To open the filter chamber



**Turn over**  
the Airpura



**Remove** the 4  
retaining screws



**Take off**  
the cover



**Remove**  
the gasket



**Position** the  
Prefilter inside  
the filter  
chamber



**Place** a felt gasket at  
the bottom of the  
filter chamber



**Unfold** the filter slider  
(Supplied with replacement  
filters or on request  
Part#6F 001)



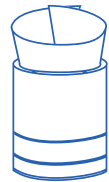
**Roll it**  
into a spiral



**Insert** the tube  
into the filter  
chamber inside  
the Prefilter



**Let** the spiral  
open to fill  
the opening



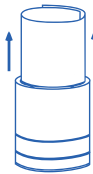
**Open** the top of the  
spiral to make a  
slight funnel



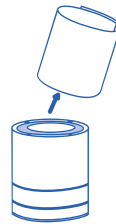
**Insert** the  
Carbon canister into  
the funnel and hold it  
straight



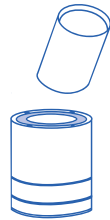
**Let** the canister  
slide down  
the filter slider



**Pull** the filter slider up  
out of the cavity using  
both hands and let the  
canister slide to the  
bottom of the cavity



**Remove** the filter  
slider and fold it  
for further use



**Slide** in the  
Hepa filter

---

## To close the filter chamber



**Replace**  
the gasket



**Position** the  
indentation in the cover  
into the center of the  
HEPA filter



**Replace**  
the 4 screws  
and tighten



**Turn** the Airpura  
back on casters